

## Sahalie Historical Note 19: Members in the 1950s

This is the third in my decadal series of articles that document all references to Sahalie Ski Club members – in this case, the **1950s**. (Find previous articles chronicling the 1930s and 1940s at [www.sahalie.org](http://www.sahalie.org).) In this article, our history sees a transition from predominantly “deep past,” reconstructed from printed references such as the *Seattle Times* newspapers, to hazy recollections of living members and their stories. It is interesting how history progresses in this way, and how the line between the deep past and living memories continues to move inexorably forward with each passing. Help me to reconstruct these memories while our elders remain. Life is short, and one never knows what will be lost tomorrow if not recorded today. As in all of these notes, speak up if any names or events bring up an old story that should be told or a fact corrected or elaborated on.

The core members of Sahalie Ski Club regrouped after World War II and the devastating fire of 1943 and rebuilt a new lodge on the same spot as the old, although following a different design. This work was completed sufficiently to warrant opening of this new lodge as of 1948, although it was only a partially-built, rough frame at the time with much finish work to do. Still, the date is significant -- the sign that now hangs in the junior room is thus of great historical value to the club.

Why didn't the club rebuild using the original Arthur L. Loveless design? Who designed the new post-and-beam structure? Answers are lost (unless one of our members recalls stories from the elders...).



Members who kept the club alive and rebuilt the lodge after the war included **Norm Cressy**<sup>1</sup>, **Dick and Jeanne Greenway**<sup>2 3</sup>, **Dallas Long**<sup>4</sup>, **Oscar Maudslein**<sup>5</sup>, **Lars and Emma Nerland**<sup>6 7</sup>, **Bill and Virginia Smith**<sup>8 9</sup>, **Steven and Marjorie Skubi**<sup>10 11</sup>, **Bill and Elsa Turner**<sup>12 13</sup>, and **Elwyn Weide**<sup>14</sup>.

**Don Greenway**<sup>15</sup> was born into the club in this era, in 1945, son of Dick and Jeanne Greenway; Dick had joined Sahalie at the age of 18 in 1941. **Randi (Turner) Bley**<sup>16</sup> was born into the club in 1947; her brother **Bill Turner, Jr.**<sup>17</sup> (variously known as "Pine" or "Biff") was added in 1949; their parents, Bill and Elsa (Engstrom) Turner, had met at the club in the late 1930s and married in 1941. **Shirley Smith**<sup>18</sup>, **Mike Smith**<sup>19</sup> and **Larry Smith**<sup>20</sup> were born into the club in 1948, 1950 and 1954, respectively, children of Bill and Virginia (Burke) Smith, who met at the club in the late 1930s and married in 1942.

These long-time members recall the early years when they were kids, hiking into the Sahalie Lodge on weekends after parking on the main road (over near what is now I-90), going across an old wooden bridge over Commonwealth Creek and up the slope from the bridge to enter the lodge under what is now the kitchen into the entrance door in what is now the Pre-Teen Room at the bottom of the stairs across from the Senior Room door. That explains the robust door to this small current room – it was the original main entrance to the lodge! There were no walls on the ground floor on the southwest side of the building. Wood was stored there and the area was open to the outside in what is now the Junior Room and Pre-Teen Rooms.

**Don and Joan Jones**<sup>21 22</sup> joined Sahalie in the early 1950s, maybe 1951?<sup>23</sup> Don was president of Sahalie sometime soon thereafter, in the early 1950s. Joan recalls that the new lodge was still quite drafty as well as rough: "the structure was done, but you could still see outside through all the cracks in the walls."<sup>24</sup> She also recalled how all Sahalie members were "workers without much extra money;" they put a lot of sweat-equity into the lodge by scrounging materials wherever they could find useful surplus and doing most of the work themselves: "we worked all the time up there." She recalled when Bill Turner found a source of old oak flooring in a downtown Seattle warehouse that was about to be torn down; he was able to recover it all for the taking. The women's crew at Sahalie then took out all the old nails and the men's crew installed the flooring on the main floor of the lodge, which we still use today; Joan remembers that this

Pacific Northwest Ski Association

## International Open Jumps

SUNDAY  
**MARCH 5**  
at MILWAUKEE ROAD

# SKI BOWL



It's the Northwest season's biggest jumping tourney—and it'll be packed with thrills for spectators. Chairman for this international meet, who will prove Olympian Hill, is Sigmund Ruud, one of the greatest jumpers of all time. Among the daring flyers who will defy gravity, you'll see Sverre Kongsgaard, Dave Fischer, Olav Ulland, Ole Lie, Gustav Raam, Kjell Stordalen, Wilmer Hampton and many others. Special low fares—Ski Bowl and return, include tax and tournament admission! Secure your tickets early!

*Special Round Trip Rates*  
INCLUDING TOURNAMENT ADMISSION AND TAX:

from  
**SEATTLE**

Adults  
**2.43**

Children  
Five and over:  
under 12 years  
**1.22**

**SEATTLE SCHEDULE, MARCH 5:**  
Regular Snow Train Lvs. . . 8:00 A.M.  
Special Spectator Train Lvs. 10:00 A.M.

**TICKETS, INFORMATION**  
Apply City Ticket Office  
or nearest Milwaukee  
Road Agent

**THE MILWAUKEE ROAD**  
ROUTE OF THE HIAWATHAS



Seattle Daily Times, March 1, 1950, p. 37.

was in 1954, since she was pregnant, at the time of pulling nails, with her first child. **Cynthia (Jones) Stanley** was born in 1955. **Larry Jones**<sup>25</sup> was born in 1957. Younger sibling **Jennifer (Jones) Potter** was born in 1960.

During the time of the Cold War red scare, the Pacific Northwest Ski Association was noted in 1950 as “organizing for mountain guerrilla warfare in case of invasion of this area by enemy troops.” PNSA skiers were set to “guard mountain passes, hydroelectric projects, domestic water supplies, power lines and communication systems....”<sup>26</sup>

No Sahalie skiers are noted in any PNSA race results from the early 1950s. It appears that the remaining members of the club were focused more locally on re-building the lodge and not on regional slalom or downhill events.

After all of the pre-war newspaper coverage as skiing blossomed in the Northwest, there is but a single reference to the Sahalie Ski Club in the entire decade of the 1950s in the *Seattle Times*. In 1953, **Bill Smith**’s name appears in a fishing article by **Enos Bradner**, a reporter for the *Times*, who was visiting Alaska that summer. “Tomorrow,” Enos wrote, “Bill Smith, a Seattle man who was my old skiing partner in the Sahalie Ski Club, will take us to the Indian village of Klawock for some rainbow fishing.”<sup>27</sup>

Joan Jones recalled that the Sahalie lodge of the early 1950s was a dancing spot on Saturday nights. She and Don were attracted to it because they were members of a square dance group in Seattle, with the Gledhills, called the “Rhythm Reelers.” She recalled that Sahalie lodge was jumping in the evenings with schottisches, polkas, waltzes and square dance tunes. Although the music has changed, the scene is familiar 60 years later.

The water supply in the Sahalie lodge of the 1950s came from Commonwealth Creek upstream. Sahalie also supplied Washington Alpine’s cabin during this time. Joan Jones recalled that the pipes in the lodge often froze solid; opening members would have to take blow torches to the metal pipes throughout the building to get the flow going for the weekend.<sup>28</sup>

The earliest *Sahalie Sentinel* newsletter that exists in today’s records, from November, 1956, implies that **Lars** and **Emma Nerland** had been viewed as “lodge custodians.” A change was suggested at that time to require all members to serve as lodge managers on assigned weekends. “The decision to organize a plan in which all members will have a chance to take part in the operation of the lodge during the ski season will be of interest to everyone. The plan will work like this – two couples will be assigned each weekend to open the lodge. That is they will be responsible for getting the fires started, seeing that the water is running, ...(etc.).”<sup>29</sup>

These earliest club newsletters list the following as active members in late 1956: **Ole** and **Irene Almass**<sup>30 31</sup>, **Les Anderson**<sup>32</sup>, **Cliff Barlament**<sup>33</sup>, **Bud** and **Ione Berg**<sup>34 35</sup>, **Lou Carter**<sup>36</sup>, **Hal** and

**Margaret Condon**<sup>37 38</sup>, **Keith and Helaine Gledhill**<sup>39 40</sup>, **Frank Keifner**<sup>41</sup>, **Bud Lawrenson**<sup>42</sup>, **Phil and Ginny Luke**<sup>43 44</sup>, **Lars and Emma Nerland**, **Art Seels**<sup>45</sup>, **Bert Smith**<sup>46</sup>, **Merle Walker**<sup>47</sup>, and **Maurice and Jewell Wayman**<sup>48 49</sup>.

**Bud Berg** was listed as president for the 1956/1957 winter season.

Jewell Wayman recalled that she and husband, Maurice, came into the club with a bunch of other square dancers – she confirms Joan Jones’ account that Sahalie was a hopping lodge on winter weekends. She also confirmed Joan’s description of the lodge at that time as “primitive, with bare planks on the floors and walls,” and that it was a big commitment to be a member then: “we arrived on Friday night and stayed until Sunday night; we worked hard all year ‘round up there, yet we had a great time.”<sup>50</sup>

The January, 1957, New Year’s Eve party was cancelled at the last minute due to lack of snow at the Pass. “The committee decided it would be best to postpone our party...,” noted the *Sentinel*.<sup>51</sup>

Additional members to those listed above appear in the January, 1957, club newsletter: **Louie Bourgault**<sup>52</sup>, **Clarence Breedman**<sup>53</sup>, **Thomas Coburn**<sup>54</sup>, **Norm Cressy**, **Dick and Jeanne Greenway**, **Claire Hathaway**<sup>55</sup>, **Don and Joan Jones**, **Jerry Lind**<sup>56</sup>, **Dallas Long**, **Loyal Knight**<sup>57</sup>, **Oscar Maudslien**, **Ray M. and Irene McFarland**<sup>58 59</sup>, **Don and Hazel Miller**<sup>60 61</sup>, **Chuck Priebe**<sup>62</sup>, **Bill and Virginia Smith**, **Thomas Tews**<sup>63</sup>, **Bill and Elsa Turner**, and **Larry and Dorothy Waring**<sup>64 65 66</sup>.

New members **James and Maxine Keesling**<sup>67 68</sup> and four kids joined the club in February, 1957.<sup>69</sup>

In February and March of 1957, Aldie Swanson of the P.I. ski school was on-site on Sundays to offer ski instruction for Sahalie members.<sup>70</sup>

In March, 1957, new members **Stanley, Jr. and Lorraine Atwood**<sup>71 72</sup> were introduced; they were sponsored by Larry Waring, and brought **Stan, III**<sup>73</sup> (age 11) and Susan (age 5) into the club. Also, **Donald and Dorothy Klopfer**<sup>74 75</sup> were new members, sponsored by Bill Smith.<sup>76</sup> **Elwyn Weide** was mentioned for the first time in May, 1957, although he had been a member since 1940.<sup>77</sup>

In September, 1957, dues were raised to a whopping \$17.00 per year (junior members \$10). The board noted that it felt the previous dues had not been adequate: “We hope the membership will be in accord with our action.”<sup>78</sup>

In October, 1957, new members **William M. (Bill) and Jeanne Gue**<sup>79 80</sup> were announced, along with three kids, the youngest by the name of **Robert (Bobby) Gue**<sup>81 82</sup>.

Fall work parties in 1957 emphasized stump removal on the ski hill behind the lodge. “Early this year it was requested that each family be responsible for the removal of one stump on the hill.

**Stanley F. Atwood, Jr.** (b. 1916) was a Seattle native; his father, Stanley, Sr., was a history teacher at West Seattle High School who served as Washington State Superintendent of Public Instruction from 1936 to 1940. Stan Jr. was a star athlete at Lincoln High School, class of 1934. He was a state champion at table tennis, as well as a swimmer, life guard and swim teacher at local pools and parks. He went on to U.W for his undergraduate degree and to earn his law degree, also at U.W.

**J. Lorraine (Slingsby) Atwood** (b. 1918) grew up in Stenagar, Stevens County, between Colville and Spokane in the rural Okanagan (nearest town on today's maps is Chewelah). She came to live with her uncle in the Greenwood neighborhood of Seattle as a teenager and graduated from Lincoln High School in 1936.

Lorraine says that she and Stan met "in the backseat of a car headed to ski at Paradise" in the late 1930s. They were married at the Boston Navy Yard in 1945. Stan trained with the famed 10<sup>th</sup> Mountain Division at Camp Hale in Colorado during 1943-44, but transferred out of the Army to take an officer position with the Navy, where he served in the Pacific theater near the end of WWII.



Stan Atwood Jr. in his Lincoln High School days, 1934; Lorraine Slingsby at Lincoln High School in 1934 (Both photographs from *Lincoln H.S. Yearbook 1934*). Lorraine Atwood at Sahalie in 2001 (photo by Dave Galvin).

The Bill Smith family had theirs out – how about YOU? We all know what an improvement this will be and how much it will enlarge our skiing area. So – let’s get busy!”<sup>83</sup> Jewell Wayman confirmed that stump blasting was an ongoing chore in the late 1950s. She recalled that Larry Waring was “chief blaster” for stumps on the ski hill.<sup>84</sup>

Also in the fall of 1957 it was announced that rates would go up for use of the rope tows for the upcoming winter season. “Rates on the ski tows were voted on and approved as follows:

Adults (16 & over, either tow) ...	50 cents,
Children (to 16, big tow) ...	25 cents,
Children (under 12, little tow) ...	10 cents.” <sup>85</sup>

After joining Sahalie in 1957, attorneys **Stan Atwood** and **James Keesling** went to work to shore up the legal foundations of the club, often at adversarial odds as to how to proceed (“Keesling and Atwood were like Republican versus Democrat,” noted Jewell Wayman, who hosted many of the contentious board and members’ meetings<sup>86</sup>). Up until then, the Sahalie Ski Club existed as an unincorporated “association” that had grown out of the Turn Verein and had vague connections to what became known nationally as the American Turners. In December, 1957, Sahalie Ski Club was officially incorporated with the State of Washington as an independent, non-profit corporation; signers of the articles of incorporation included **William O. Smith**, **Lars Nerland**, **William W. Turner**, **Dallas Long** and **James J. Keesling**. They re-registered the Seattle Gymnastic Society with the state as a non-profit corporation, noting its origins and connection to the now defunct Seattle Turn Verein and its original incorporation as Seattle Gymnastic Society in 1918. They also had the Northern Pacific Railway Company re-convey the property at the Pass to Seattle Gymnastic Society.

Meeting notes in the late 1950s refer to two “factions” within the ski club: the “Turner Group” and the “Sahalie Group.” “Over the years, apparently, there has been strife between these two factions primarily caused by the belief that the National Turner Organization had some claim against the assets of the local organization. Because of this, from time to time, groups of the membership have broken away. In addition because of such membership instability, it has been impossible to complete the lodge.”<sup>87</sup> Newsletters in this turbulent time note at least the following members as withdrawing: Merle Walker, Hal and Margaret Condon, Archie and Ethel Fawver.

Upon incorporating as a non-profit corporation, an interim three-member board of trustees was established to transition the organization from old to new. **Bill Smith**, **Lars Nerland** and **Jim Keesling** served in this capacity. All old members of the “association” known as Sahalie Ski Club were made full members of the new Sahalie Ski Club, Inc. A full list of these members is attached in Table 1, as of January, 1958. **Bill Smith** was the interim president through this transition from late 1957 into early 1958.

**Table 1. A full list of members of the newly incorporated Sahalie Ski Club, Inc.,  
as of January 13, 1958.<sup>88</sup>**

<b>Olaf and Irene Almaas</b>	<b>Robert<sup>104</sup> and Mary Lou<sup>105</sup> Johnson</b>	<b>James<sup>121</sup> and Merle<sup>122</sup> Patchell</b>
<b>Leslie and Vista<sup>89</sup> Anderson</b>	<b>Donald and Joan Jones</b>	<b>Michael Petherick (Jr. mbr.)</b>
<b>Stan and Lorraine Atwood</b>	<b>James and Maxine Keesling</b>	<b>Charles Priebe</b>
<b>Cliff and Nora Barlament</b>	<b>Frank and Henny<sup>106</sup> Kiefner</b>	<b>Donald<sup>123</sup> and Hazel<sup>124</sup> Rossman</b>
<b>Bud and Ione Berg</b>	<b>Donald and Dorothy Klopfer</b>	<b>Gene Roetciscender (Jr. mbr.)</b>
<b>Louis and Marge<sup>90</sup> Bourgault</b>	<b>O.<sup>107</sup> and Lois<sup>108</sup> Krogen</b>	<b>Steve W. and Marge Skubi</b>
<b>George<sup>91</sup> and Doris<sup>92</sup> Bernd</b>	<b>Bud and Betty<sup>109</sup> Lawrenson</b>	<b>Bert and Lillian<sup>125</sup> Smith</b>
<b>Theo<sup>93</sup> and Marie<sup>94</sup> Carroll</b>	<b>Dallas Long</b>	<b>Clair<sup>126</sup> and Alta<sup>127</sup> Smith</b>
<b>Louis, Jr., and Jean<sup>95</sup> Carter</b>	<b>Herb<sup>110</sup> and Aurelia<sup>111</sup> Lonseth</b>	<b>William and Virginia Smith</b>
<b>Gretchen Cramer (Jr. mbr.)</b>	<b>Phil and Ginny Luke</b>	<b>R.L. (Bob) Stevenson<sup>128</sup></b>
<b>Norman and Billie<sup>96</sup> Cressy</b>	<b>Lew<sup>112</sup> and Jane<sup>113</sup> Macready</b>	<b>Charles<sup>129</sup> and Norma<sup>130</sup> Strong</b>
<b>Fred<sup>97</sup> and Court<sup>98</sup> Dyer</b>	<b>Oscar and Phyllis<sup>114</sup> Maudslien</b>	<b>Mercedes Styke<sup>131</sup></b>
<b>Myra Fisher (Jr. mbr.)</b>	<b>E.M. (Ray) and Irene McFarland</b>	<b>Charles Swanson<sup>132</sup></b>
<b>Dr. Park W.<sup>99</sup> and Delores<sup>100</sup> Gloyd</b>	<b>Anne Melde (Jr. mbr.)</b>	<b>William and Elsa Turner</b>
<b>Keith and Helaine Gledhill</b>	<b>Donald and Hazel Miller</b>	<b>Don Waring (Jr. mbr.)</b>
<b>Richard and Jeanne Greenway</b>	<b>Lars and Emma Nerland</b>	<b>Larry and Dorothy Waring</b>
<b>W.M. and Jean Gue</b>	<b>Henry<sup>115</sup> and Lorraine<sup>116</sup> Oswin</b>	<b>Larry, Jr.,<sup>133</sup> and Rose<sup>134</sup> Waring</b>
<b>William Hardy<sup>101</sup></b>	<b>Milian<sup>117</sup> and Olive<sup>118</sup> Overbye</b>	<b>Maurice and Jewell Wayman</b>
<b>Lindola Harris (Jr. mbr.)</b>	<b>Ken<sup>119</sup> and Jean<sup>120</sup> Peck</b>	<b>Elwyn and Marion<sup>135</sup> Weide</b>
<b>K.B. Hassain<sup>102</sup></b>		<b>Gus<sup>136</sup> and Gino<sup>137</sup> Wigen</b>
<b>Lloyd Holtz<sup>103</sup></b>		<b>Butch Wingate<sup>138</sup></b>





Wayman family photo of skiers in front of the Sahalie lodge in the late 1950s. Note the size of the “original” post-WWII lodge, with a small rope tow running from down near the current Alpental Road (there was no road back then) up toward the kitchen corner. (Photo by Jewell Wayman.)

On February 3, 1958, the first meeting of members of the newly incorporated Sahalie Ski Club, Inc., was held. **Bill Smith** was elected to the board of trustees as its new president. Other members of this new board included **Olaf Almaas, Leslie B. Anderson, Cliff Barlament, Jeanne E. Greenway, James J. Keesling, Bud Lawrenson, Larry J. Waring** and **Maury Wayman**.

In November, 1958, **Maurie Wayman** was announced as the new president. Existing members mentioned for the first time in the newsletter included **Ted Carroll, Lew Macready, Fred Dyer** and **Ken and Gail**<sup>139</sup> **Peck**.<sup>140</sup>

Overnight fees were raised to 50 cents in December, 1958. “A change has been made to the lodge fees. Overnight fee for members will be 50 cents per person regardless of age. Day fee for members will be 25 cents per person regardless of age. Overnight fee for guests will be \$1.00 per person regardless of age and day fee for guests will be 50 cents per person regardless of age.”<sup>141</sup>



**Don MacDonald**<sup>142</sup>, likely the same “youth” who discovered the Sahalie lodge fire in 1943 when he was 14 years old, developed a “How To Ski” TV series in 1958 on Channel 9 in Seattle, and was a ski instructor at the Pass in 1959 (see photos at the end of this article).

The January, 1959, *Sentinel* noted that kids needed games to keep from getting into mischief, and that ski equipment and clothing needed I.D. Some things never change, eh? “A request has been made for the parents to bring to the Lodge playing cards and games to help keep the youngsters amused during the non-skiing hours. ...Keeping the youngsters happily amused adds to the enjoyment of all and cuts down on the confusion and mischievousness. ... Members are (also) urged to keep track of their ski equipment, accessories and clothing to avoid misplacement and loss. It’s very helpful if the family name or initials are put on each and every article. This is very easily done with a laundry marking pen.”<sup>143</sup> Current readers please note: this request was posted 53 years ago!



The Wayman family on the Sahalie hill around 1959 or 1960; they were members from 1955 through the mid 1960s: Maurie, Tracy, Jewell, Roger and Lance. Can you identify exactly where they were on the Sahalie property? (Photo credit to Jewell Wayman.)

In October, 1959, **Eddie Luke**<sup>144</sup> (son of Phil and Ginny Luke) was elected president.<sup>145</sup>

It was also noted in October, 1959, that many more stumps had been blasted to improve the ski hill behind the Lodge. This was an ongoing concern to reduce bumps and hazards and to smooth out the hill for the winter season.<sup>146</sup>

Fall work parties were hazardous: "The patching job on our roof is completed and we're happy to report that **Maury Wayman** and **Bill Gue** are doing well from the bad spill they took when the ladder gave way as they were working near the chimney. Bill suffered a fracture of a vertebrae[sic], but is able to be up now in a body cast. Maury has a cast on his broken foot but gets around, as per usual, on crutches."<sup>147</sup>

Existing members mentioned for the first time in the newsletters in November, 1959, included **Burdette** and **Shirley Anderson**<sup>148 149</sup>, **Scott Cassill**<sup>150</sup>, **Park** and **Delores Gloyd**, **Bill Hardy**, **O. Krogen**, **Clay** and **Sherry Noonan**<sup>151 152</sup>, **Ralph** and **Florence Penz**<sup>153 154</sup>, **Don Rossman**, **Steve Skubi**, **Phil Smith**<sup>155</sup>, **Bob Stevenson**, **M. Styke**, **Don Waring**, and **Charles** and **Betty Warner**<sup>156</sup>  
<sup>157 158</sup>

The last note of the decade indicates that the main bridge used by Sahalie members to cross Commonwealth Creek washed out in the floods of late November, 1959. As is typical of that time of year, early snow coupled with a warm, wet storm caused major flooding throughout Western Washington, including a 1,200-foot wash-out of the main Snoqualmie Pass Highway between North Bend and the Summit, which closed access to the Pass for almost a month.<sup>159</sup> The December, 1959, *Sentinel* notes that "... [Washington] Alpine Ski Club has agreed to let us use their foot bridge. The entry to the Alpine trail is about 100 yards farther down the road than our usual trail."<sup>160</sup> Maybe this was the occasion when a surplus railroad flatbed car was used to serve as a replacement bridge the following summer?<sup>161</sup>

And thus ended a pivotal decade in the life of Sahalie Ski Club. Very soon in the early 1960s, we see familiar family names appear such as **Gilson**, **Hopp**, **Adams**, **Murray**, **Boyle**, **Gunner**, **Odegard** and **Gangnes**. Stay tuned for (and help me fill in) the details. I'm still trying to connect with a few of the remaining members who were active in the 1950s. Let me know if you have additions, corrections or, especially, photos and stories to tell to fill in our club's history.

■ Dave Galvin (© Copyright 2012, Dave Galvin, [galvind53@gmail.com](mailto:galvind53@gmail.com))

(Updated 10/5/2012)

Please let me know if you have comments or corrections, at [galvind53@gmail.com](mailto:galvind53@gmail.com).

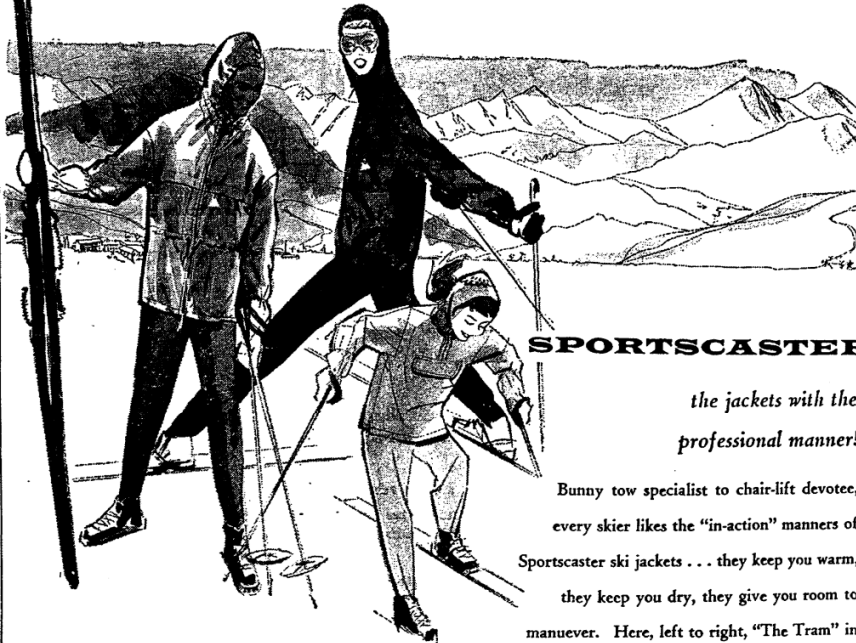
and Phi Sigma Society, science honorary. Her husband, a graduate of Santa Barbara University, is a member of Sigma Tau Gamma Fraternity and Beta Beta Beta Honorary.

League Auxiliary, will honor two past presidents, Mrs. Stanley Blakey and Mrs. Donald Prouty, at a no-host luncheon at 1:30 o'clock tomorrow in the Hotel Edmond Meany.

Hobby and Craft Shop, Third Floor, Downtown Only

order yours by mail or call SE. 1234, ext. 444

## GIFTS FOR SKIERS

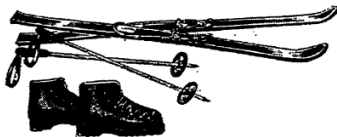


### SPORTSCASTER

*the jackets with the professional manner!*

Bunny tow specialist to chair-lift devotee, every skier likes the "in-action" manners of Sportscaster ski jackets . . . they keep you warm, they keep you dry, they give you room to maneuver. Here, left to right, "The Tram" in 2-ply nylon, **25.00**; The "Number 1" in 2-ply nylon, **17.95**; The Zermat in cotton poplin, children's sizes, **13.95**; adult sizes, **17.95**.

Sportsmen's Shop, North Balcony, Downtown;  
Middle Level, Northgate



*"The Alpine" complete ski outfit*

**49.95** special

Includes Fi S Alpine skis with laminated hickory construction; Colorado double boots by Le Trappeur; A & T safety bindings, aluminum ski poles. Ready to go!



meet Don MacDonald, our ski expert, well-known Northwest skier, who holds a diploma from the French National Ski School, on hand in our department to advise you about proper ski equipment and your skiing techniques.

THE BON  
MARCHE

downtown  
northgate

WHERE  
CHRISTMAS  
MEANS MORE



*"Zurs" humanic double ski boot  
imported from Austria, 29.95*

Made in Austria, by the people who outfit the Olympic champions—with the new concept of glove-like fit. Fits high at the ankle, has new single-pull inner boot lace.

*Hart plastic and metal skis, 75.00*

Metal and plastic design by Hart, they won't wander, weave, wobble, are good in any snow. Black finish.

*A&T laminated wood skis, 39.95*

Anderson and Thompson's new "Shastas," have full plastic base, interlocking metal edges. In blue.

Seattle Daily Times, November 30, 1956, p. 22. Note the photo and reference to Don MacDonald, "ski expert."



**HOW IT'S DONE:** Don Macdonald, instructor at the Snoqualmie Summit P.-T. A.-sponsored ski school, yesterday demonstrated to his beginning class the correct way to make a kick turn. Despite cold temperatures,

more than 1,450 pupils attended the first classes of the season. More than 50 instructors were on hand to give the youngsters a good workout on the snowy slopes.—Times photo by Larry Dion.

*Seattle Sunday Times, January 4, 1959, p. 21.*



**TROPHY AT STAKE:** Don Macdonald, right, ski instructor at Snoqualmie Summit, showed Don Hanson, 13, and Susie Salladay, 15, one of the trophies that will be at stake in the fourth annual Thunder-

bird ski race at the summit Sunday. Macdonald is offering several trophies he earned in European ski competition as perpetual awards in the tourney for junior-class flyers.

*Seattle Daily Times, April 8, 1959, p. 20.*

---

<sup>1</sup> **Norman Cressy**, born 13 April 1904, a Sahalie member since 1938, was issued a WA Social Security number, died in Seattle in December, 1979 (ancestry.com).

<sup>2</sup> **D. Richard (Dick) Greenway**, born 26 August 1922, first appears connected to Sahalie in June, 1941, for a golf tournament, when he would have been 18 years old. He married Jeanne Woods in 1944.

<sup>3</sup> **Jeanne E. Woods Greenway**, born 5 November 1925 in Valdez, Alaska, moved to Seattle as a teen and met Dick; they were married in 1944. She died on 5 September, 2011 (*Seattle Times* obituaries, 9/8/2011).

<sup>4</sup> **Dallas D. Long**, born in Illinois 22 August 1911, was living in Seattle at the 1930 census; his parents were Luther and Babe Long. Randi Bley and Pine Turner report that Dallas was their dad's best friend; they and most other kids growing up in the club called him "Uncle Dallas." He was one of the stalwarts of the club through the 1950s and '60s. He never married. He died in Seattle on 3/28/1985.

<sup>5</sup> **Oscar C. Maudslien**, born 26 October 1914, a Sahalie member since 1937, was issued a Social Security number in WA. His father's name was Nels. He originally came from Great Falls, Montana but attended schools in Seattle. He married Phyllis Whiteside (also a Sahalie member) on 7/1/1939. He died in California on 2/28/1989 (ancestry.com).

<sup>6</sup> **Lars Nerland**, born in Kalvi, Norway, 13 July 1902. He immigrated to the U.S. via Canada in 1926. He married Emma Evensen in Seattle on 9/21/1929. They both joined Sahalie in 1938 and were stalwarts of the club through the 1970s. He died in Seattle on September 3, 1987 (ancestry.com).

<sup>7</sup> **Emma Evensen Nerland**, born in Mesnali, Norway, 6 February 1904. She came to the States in 1928. She married Lars Nerland on 9/21/1929. They both joined Sahalie in 1938 and were stalwarts of the club through the 1970s. She died in Seattle on February 10, 1981 (ancestry.com).

<sup>8</sup> **William O. (Bill) Smith**, born in 1915, probably joined Sahalie in the 1930s; the earliest tangible proof of his association with the club is his membership card now displayed at the lodge, dated January, 1940. Bill first appears connected to Sahalie in the published record in June, 1941, for a golf tournament. He was involved in the Northwest fishing industry and often spent the summers in Alaska with Lars Nerland; Bill worked for Libby's. He and Virginia Burke were married in December, 1942, when he would have been 27 years old. Bill served as president of Sahalie in 1957/58. He was renowned for his constant work on the lodge, tows, water line, bridge, whatever needed fixing. Because of this dedication to the club, Bill was named Sahalie's first "Honorary Member" in 1961. He died on April 29, 1988.

<sup>9</sup> **Virginia Burke Smith**, born 23 January 1919, first shows up at Sahalie in January, 1941, when she would have just turned 22. Ginnie married Bill Smith on December 5, 1942. She continued to be active in the club through the rest of the century. She was the one to call for lodge reservations all through the 1950s and much of the 60s, and served as the club historian after that (although most of her records were lost). She died in 2001. Their son, Larry, is a member as of 2012, representing one of the longest family memberships in Sahalie.

<sup>10</sup> **Steven W. Skubi**, born 26 June 1911, married Marjorie Burke in 1942. Steve was in the food business, owner of the Lincoln Market and the Blue Diamond Meat Market at the Security Public Market in Seattle (located between 3<sup>rd</sup> and 4<sup>th</sup> Avenues on Lenora Street), and served as an officer in the Washington Food Merchants Association. He was active in the club all through the 1950s and into the late '60s, when Margie died. He died in Seattle on October 2, 1993.

<sup>11</sup> **Marjorie J. Burke Skubi**, born 1917, Sahalie member since 1939, was living in Seattle at the 1930 census, graduated from Lincoln High School in 1934, married Steven Skubi in 1942, and died in Seattle on 1/4/1968, at age 51. Their son, Steven Jr., died in a mountaineering accident in May, 1962, at age 15. Her younger sister, Virginia M. Burke, born in 1919, was also a Sahalie member as of 1941; she married Bill Smith.

<sup>12</sup> **William W. (Bill) Turner**, born in Seattle 17 October 1916, graduated from Broadway High School, first shows up connected with Sahalie in the announcement of his engagement to Elsa Engstrom in January, 1941; he would have been 24 at the time. He was a life-long Sahalie member, a stalwart of work parties along with the likes of Bill Smith. He died on December 3, 2006 (age 90).

<sup>13</sup> **Elsa Engstrom Turner**, born 28 December 1916, first appears associated with Sahalie in January, 1941, in the same newspaper notice that she and Bill Turner were engaged. She would have just turned 24. She is the longest-running living member of the club as I write this, at age 96. Their daughter, Randi Bley; their son, William (Bill, Biff,



---

Pine) Turner, Jr.; Biff's daughter, Carli; Bill and Elsa's grandson, Hans Bley; Hans' wife Rachel; and Bill and Elsa's great-granddaughters, Grace Ann Bley and Elsa Marie Bley, all are members in 2012, the oldest family in the club with four generations represented.

<sup>14</sup> **Elwyn H. Weide**, born 26 February 1911, was living in Seattle at the 1920 and 1930 censuses; his parents were Otto and Minnie Weide from Minnesota. He was president of Sahalie at the time that the original lodge burned down in 1943. He had two sons, Rich and Daryl. He was living in Maple Valley in 1993 (ancestry.com).

<sup>15</sup> **Donald R. Greenway, Jr.**, born 25 April 1945, son of Dick and Jeanne Greenway.

<sup>16</sup> **Randi L. Turner Bley**, born 23 March 1948, daughter of Bill and Elsa Turner. Married William R. Bley (born 16 March 1948, originally from Spokane).

<sup>17</sup> **William W. Turner, Jr.**, born 18 July 1949, son of Bill and Elsa Turner. Known as "Biff" or "Pine," both nicknames in need of explanation here....

<sup>18</sup> **Shirley Y. Smith**, both 1 January 1948, daughter of Bill and Virginia Smith.

<sup>19</sup> **Michael W. Smith**, born 29 November 1950, son of Bill and Virginia Smith. He died in 2011, age 61.

<sup>20</sup> **Lawrence N. Smith**, born 28 January 1954, son of Bill and Virginia Smith.

<sup>21</sup> **Donald E. Jones**, born 21 January 1927 in Tacoma, was a Sahalie member since sometime in the early 1950s. His parents were Homer and Sarah (Hazen) Jones, homesteaders on Whidbey Island. He was a friend of Keith Gledhill at Ballard High School. He joined the Navy at age 16 and served on a mine-sweeper in World War II, finishing high school after the war at Broadway. He married Joan L. Fourmont on April 2, 1949. He was Sahalie president in the early 1950s, soon after joining. He worked for the telephone company and taught others at Sahalie how to climb poles. He passed away on July 7, 1985. (Joan Jones, personal communication, April 21, 2012.).

<sup>22</sup> **Joan Lorraine Fourmont Jones**, born 28 July 1928, was a Sahalie member since the early 1950s. Her parents were Laurence E. and Charlotte (Herrin) Fourmont; Laurence died in WWII; Charlotte enjoyed many visits to Sahalie lodge as a guest of Don and Joan. Joan continues as one of our longest-running members in 2012.

<sup>23</sup> Don and Joan Jones joined in 1951, according to conversations with Joan on 4/21/2012, but she contradicted that information by recalling that Don had been president in 1950. They were newlyweds at the time of joining (married 4/1949 when they were 22 and 21), sponsored by Keith and Helaine Gledhill (Don had gone to Ballard High School with Keith).

<sup>24</sup> Joan Jones, personal communication with Dave Galvin, April 21, 2012.

<sup>25</sup> **Laurence S. Jones**, born 9 April 1957, son of Don and Joan Jones of Whidbey Island.

<sup>26</sup> "N.W. Skiers To Train For Guerrilla War," *Seattle Daily Times*, December 18, 1950, p. 1.

<sup>27</sup> Enos Bradner, 1953, "Fishing Safari: Alaskan Seafood Dinner Treat for Bradner Party," *Seattle Daily Times*, June 5, 1953, p. 31.

<sup>28</sup> Joan Jones, personal communication with Dave Galvin, April 21, 2012.

<sup>29</sup> "Lodge manager system set up," *Sahalie Sentinel*, November, 1956.

<sup>30</sup> **Olaf "Ole" Almaas**, born 17 August 1916 in Norway. He immigrated to the U.S. in 1925, with his family, father Magnus Almaas and mother Elisa Almaas. He married Irene on 26 August 1942, and served in the U.S. Army during WWII. They had three kids, Kathleen (Almaas) Babbitt-Breece, Kristin (Almaas) Flynn, and Arne Almaas, who grew up in the club in the 1950s. Ole worked as a brick mason, and was renowned as an accordion player, filling the dining room or senior room at Sahalie with music on many an evening. He died in Snohomish on 8 February 2007.

<sup>31</sup> **J. Irene Nelson Almaas**, born 17 June 1919, in Blyn, Washington. She married Olaf on 26 August 1942 before he went into the army in WWII. She is still living, with son, Arne, in Snohomish as I write this article in 2012.

<sup>32</sup> **Les Anderson**,

<sup>33</sup> **Cliff Barlament**, \_\_\_\_\_. He owned Barlament Lumber Co. and lived in Woodway. He had a son, Noel.

<sup>34</sup> **Bud Berg**, \_\_\_\_\_, was president of Sahalie in the 1956-'57 season.

<sup>35</sup> **Ione Berg**,

<sup>36</sup> **Lou Carter, Jr.**,

<sup>37</sup> **Hal Condon**,

<sup>38</sup> **Margaret Condon**,

<sup>39</sup> **Keith Gledhill**, . Keith was a buddy of Don Jones from their Ballard High School days, and brought Don and Joan into the club.

<sup>40</sup> **Helaine Gledhill**, \_\_\_\_\_, wife of Keith Gledhill.

---

<sup>41</sup> **Frank Keifner,**  
<sup>42</sup> **Bud Lawrenson,**  
<sup>43</sup> **Phil Luke,**  
<sup>44</sup> **Ginny Luke,**  
<sup>45</sup> **Art Seels,**  
<sup>46</sup> **Bert Smith,**  
<sup>47</sup> **Merle Walker,**  
<sup>48</sup> **Maurice (“Maury” or “Maurie”) Wayman,** born 13 August 1918, died 23 June 2000. Member since the mid 1950s, president in 1959. Maury and Jewell had three boys, Roger, born around 1945, Lance, born c. 1950, and Tracy, born 1955. Tracy is a dentist in Seattle whose daughter went through public schools with Nick Galvin. Small world indeed.

<sup>49</sup> **Jewell Jean Jackson Wayman,** born 6 August 1921, is still alive and was interviewed by Dave Galvin in August 2012. Their house in north Ballard was the location for most Sahalie board meetings in the late 1950s. She remarried after Maurie passed away and now lives in Toledo, WA with her husband, Bud Jim Newell; she goes by Jean Newell in Toledo.

<sup>50</sup> Jewell Wayman, personal communication with Dave Galvin, August 3, 2012.

<sup>51</sup> “New Year’s party cancelled,” *Sahalie Sentinel*, January, 1957.

<sup>52</sup> **Louie Bourgault,**  
<sup>53</sup> **Clarence Breedman,**  
<sup>54</sup> **Thomas Coburn,**  
<sup>55</sup> **Claire Hathaway,** \_\_, lived in Lake Goodwin in the 1950s.  
<sup>56</sup> **Jerry Lind,**  
<sup>57</sup> **Loyal Knight,**  
<sup>58</sup> **Ray McFarland,** .... Son, Sid, born in 1942, is now a houseboat neighbor of Dave and Mary Sue Galvin. Sid reports working with Lars Nerland in Alaska some summers when he was a teenager. This was the connection that brought his family into Sahalie for a few years in the late ‘50s.

<sup>59</sup> **Irene McFarland,** \_\_, wife of Ray McFarland.

<sup>60</sup> **Don Miller,**  
<sup>61</sup> **Hazel Miller,**  
<sup>62</sup> **Chuck Priebe,**  
<sup>63</sup> **Thomas Tews,**  
<sup>64</sup> **Larry Waring,**  
<sup>65</sup> **Dorothy Waring,**  
<sup>66</sup> *Sahalie Sentinel*, January, 1957.

<sup>67</sup> **James Keesling,** \_\_, joined Sahalie in 1957. He was an attorney who, some members recall, tried to “take over” Sahalie soon after joining.

<sup>68</sup> **Maxine Keesling,**  
<sup>69</sup> “New members,” *Sahalie Sentinel*, February, 1957.

<sup>70</sup> “Ski instructions offered on the hill,” *Sahalie Sentinel*, February, 1957.

<sup>71</sup> **Stanley F. Atwood, Jr.,** born 11 October 1916 in Seattle. Stan’s dad had served as Washington State Superintendent of Public Instruction in the late 1930s. Stan graduated from Lincoln H.S. in Seattle in 1934. He was a champion ping-pong player as well as swimmer. He enlisted in the U.S. Army in October 1943 and trained as part of the 10<sup>th</sup> Mountain Division at Camp Hale in Colorado. His Navy commission came through in late 1944 and he served in the Pacific near the end of the war in 1945. He married Lorraine Slingsby in early 1945 while stationed in Boston. The Atwoods joined Sahalie in 1957, sponsored by Larry Waring. Stan was an attorney who sparred with Jim Keesling over the reorganization of Sahalie and the Gymnastic Society, according to some members of the time. Stan dedicated many years to the club as legal counsel, and in recognition of this service was named the second “Honorary Member” of Sahalie in 1982. He died on 1/14/1991.

<sup>72</sup> **Jeanne Lorraine Slingsby Atwood,** born 12 July 1918 in Stenagar, Stevens County, Washington (NW of Spokane). Her parents were William V. Slingsby (born 1890) and Blanche O. Slingsby (born 1891); she was the second of four children – the others were Oreatha (born 1917), Anna C. (born 1920) and Shirley L. (born 1923) (ancestry.com).

---

She came to Seattle as a teenager to live with her uncle and graduated from Lincoln H.S. in Wallingford. She met Stan "in the backseat of a car headed to ski at Paradise" in the late 1930s. They married in 1945. They Joined Sahalie in 1957. They had three children, Stan III (born 1945), Susan (born 1952), and Tommy (born 1960).

Lorraine is still active in the club at age 94 as I write this article in 2012.

<sup>73</sup> **Stanley F. Atwood, III**, born 18 December 1945, came into Sahalie with his family in 1957. He was president of the club in 1981/'82. He died 29 January 2000 at age 54.

<sup>74</sup> **Donald Klopfer**, \_\_, joined in 1957, sponsored by Bill Smith.

<sup>75</sup> **Dorothy Klopfer**, \_\_, wife of Donald Klopfer.

<sup>76</sup> "New members," *Sahalie Sentinel*, March, 1957.

<sup>77</sup> *Sahalie Sentinel*, May, 1957.

<sup>78</sup> "Dues raised to \$17," *Sahalie Sentinel*, September, 1957.

<sup>79</sup> **William M. (Bill) Gue**, born c. 1932, went to Montana State U. in the early 1950s. He married Jeanne \_\_, and lived in West Seattle beginning in 1955 (ancestry.com). Bill and Jeanne joined Sahalie in 1957. Bill was president of Sahalie in 1963/'64.

<sup>80</sup> **Jeanne H. Gue**, born 2 October 1922, died 2 June 1996.

<sup>81</sup> **Robert T. (Bobby) Gue**, born 15 December 1955.

<sup>82</sup> "Bill Smith as new president," *Sahalie Sentinel*, October, 1957.

<sup>83</sup> "Stump removal," *Sahalie Sentinel*, October, 1957.

<sup>84</sup> Jewell Wayman, personal communication with Dave Galvin, August 3, 2012.

<sup>85</sup> "Rates on the ski tows go up to 50 cents," *Sahalie Sentinel*, November, 1957.

<sup>86</sup> Jewell Wayman, personal communication with Dave Galvin, August 3, 2012.

<sup>87</sup> Sahalie Ski Club, Inc., "Minutes of Regular Meeting of Board of Trustees Held October 16, 1958."

<sup>88</sup> Sahalie Ski Club, Inc., "Minutes of Meeting of Interim Trustees Held January 13, 1958."

<sup>89</sup> **Vista Anderson**, \_\_, wife of Leslie Anderson.

<sup>90</sup> **Marge Bourgault**, \_\_, wife of Louis Bourgault.

<sup>91</sup> **George Bernd**,

<sup>92</sup> **Doris Bernd**,

<sup>93</sup> **Theo Carroll**,

<sup>94</sup> **Marie Carroll**,

<sup>95</sup> **Jean Carter**, \_\_, wife of Louis Carter, Jr.

<sup>96</sup> **Billie Cressy**, \_\_, wife of Norman Cressy.

<sup>97</sup> **Fred Dyer**, .... Son Billy, skied with Pine Turner; Billy's daughter, Lynsey Dyer, is now a top extreme skier –

Google her name to see her website: <http://lynseydyer.wordpress.com/> ).

<sup>98</sup> **Court Dyer**, \_\_, wife of Fred Dyer.

<sup>99</sup> **Dr. Park Gloyd**,

<sup>100</sup> **Delores Gloyd**,

<sup>101</sup> **William Hardy**,

<sup>102</sup> **K.B. Hassain**,

<sup>103</sup> **Lloyd Holtz**,

<sup>104</sup> **Robert Johnson**,

<sup>105</sup> **Mary Lou Johnson**,

<sup>106</sup> **Henny Kiefner**, \_\_, wife of Frank Kiefner.

<sup>107</sup> **O. Krogen**,

<sup>108</sup> **Lois Krogen**,

<sup>109</sup> **Betty Lawrenson**, \_\_, wife of Bud Lawrenson.

<sup>110</sup> **Herb Lonseth**,

<sup>111</sup> **Aurelia Lonseth**,

<sup>112</sup> **Lew Macready**,

<sup>113</sup> **Jane Macready**,

<sup>114</sup> **Phyllis Maudslein**,

<sup>115</sup> **Henry Oswin**,

---

<sup>116</sup> **Lorraine Oswin,**  
<sup>117</sup> **Milian Overbye,**  
<sup>118</sup> **Olive Overbye,**  
<sup>119</sup> **Ken Peck,**  
<sup>120</sup> **Jean Peck,**  
<sup>121</sup> **James Patchell,**  
<sup>122</sup> **Merle Patchell,**  
<sup>123</sup> **Donald Rossman,**  
<sup>124</sup> **Hazel Rossman,**  
<sup>125</sup> **Lillian Smith, \_\_,** wife of Bert Smith.  
<sup>126</sup> **Clair Smith,**  
<sup>127</sup> **Alta Smith,**  
<sup>128</sup> **Robert L. Stevenson,**  
<sup>129</sup> **Charles Strong,**  
<sup>130</sup> **Norma Strong,**  
<sup>131</sup> **Mercedes Styke,**  
<sup>132</sup> **Charles Swanson,**  
<sup>133</sup> **Larry Waring, Jr.,**  
<sup>134</sup> **Rose Waring,**  
<sup>135</sup> **Marion Weide, \_\_,** wife of Elwyn Weide.  
<sup>136</sup> **Gus Wigen,**  
<sup>137</sup> **Gino Wigen,**  
<sup>138</sup> **Butch Wingate,**  
<sup>139</sup> **Gail Peck, \_\_,** wife of Ken Peck.  
<sup>140</sup> "Maurie Wayman new president," *Sahalie Sentinel*, November, 1958.  
<sup>141</sup> "Overnight fees now 50 cents," *Sahalie Sentinel*, December, 1958.  
<sup>142</sup> Don MacDonald,  
<sup>143</sup> "Request for cards...; Put names or initials on stuff," *Sahalie Sentinel*, January, 1959.  
<sup>144</sup> **Eddie Luke, \_\_,** son of Phil and Ginny Luke, was president of Sahalie in 1959/1960.  
<sup>145</sup> "Eddie Luke new president," *Sahalie Sentinel*, October, 1959.  
<sup>146</sup> "Stumps blasted," *Sahalie Sentinel*, October, 1959.  
<sup>147</sup> Maury Wayman and Bill Gue fall off ladder, *Sahalie Sentinel*, October, 1959.  
<sup>148</sup> **Burdette Anderson, \_\_,** was president of Sahalie in 1962/'63.  
<sup>149</sup> **Shirley Anderson,**  
<sup>150</sup> **Scott Cassill,**  
<sup>151</sup> **Clay Noonan,**  
<sup>152</sup> **Sherry Noonan,**  
<sup>153</sup> **Ralph Penz, \_\_,** was president of Sahalie in 1964/'65.  
<sup>154</sup> **Florence Penz, \_\_,** wife of Ralph Penz, was sister of Edee Hopp, and thus was Tom Hopp's aunt.  
<sup>155</sup> **Phil Smith,**  
<sup>156</sup> **Charles Warner,**  
<sup>157</sup> **Betty Warner,**  
<sup>158</sup> *Sahalie Sentinel*, November, 1959.  
<sup>159</sup> "Man Feared Dead in Road Washout; Auto Found in Snoqualmie Pass Debris; Highway Washout Grows to 1,200 Feet," *Seattle Daily Times*, November 24, 1959, p. 1. "State Asks U.S. Aid in Road Floods," *Seattle Daily Times*, November 28, 1959, p. 4.  
<sup>160</sup> "Bridge washed out," *Sahalie Sentinel*, December, 1959.  
<sup>161</sup> Many older members have mentioned the flatbed RR car used as the main bridge, but no one recalls when it was installed.